



■ T156XH3



■ T156VMS



■ T1560X3



■ T1560X4



■ T156XZ3



■ T156LRS



■ T156X03



■ T1560X2

**SCHEMATICS**

**square Central**



100cm x 100cm H 27cm  
39,37" x 39,37" H 10,63"

**Round ANGULAR**



56cm x 56cm H 50cm  
22,05" x 22,05" H 19,69"

**Round Accent**

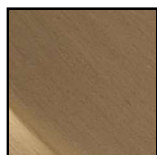


45cm x 45cm H 34cm  
17,72" x 17,72" H 13,39"

56cm x 56cm H 50cm  
22,05" x 22,05" H 19,69"

**FINISHINGS**

**Frame finishing**

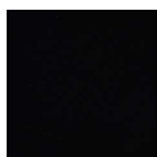


BRONZE



Pewter

**Top finishing**



COFFEE



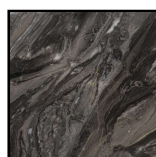
SMOKED OAK



CALACATTA  
GOLD



BRONZE MIRROR



MARMO  
OROBICO



INVISIBLE GRAY



Rain Forest Brown

## TECHNICAL INFORMATION

---

DESIGNER: Tapinassi & Manzoni

Designed by the designers of Studio Memo, the Herman coffee tables play with shapes and sizes, standing out above all for their cutting-edge design and comfort. They are characterised by refined materials and a rigorous, precise style that makes them truly timeless. Thus the design takes shape and renews itself, continually emanating beauty, design and harmony with the passing of time. The various configurations can intersect to create unique arrangements that are perfectly integrated with their environment.